

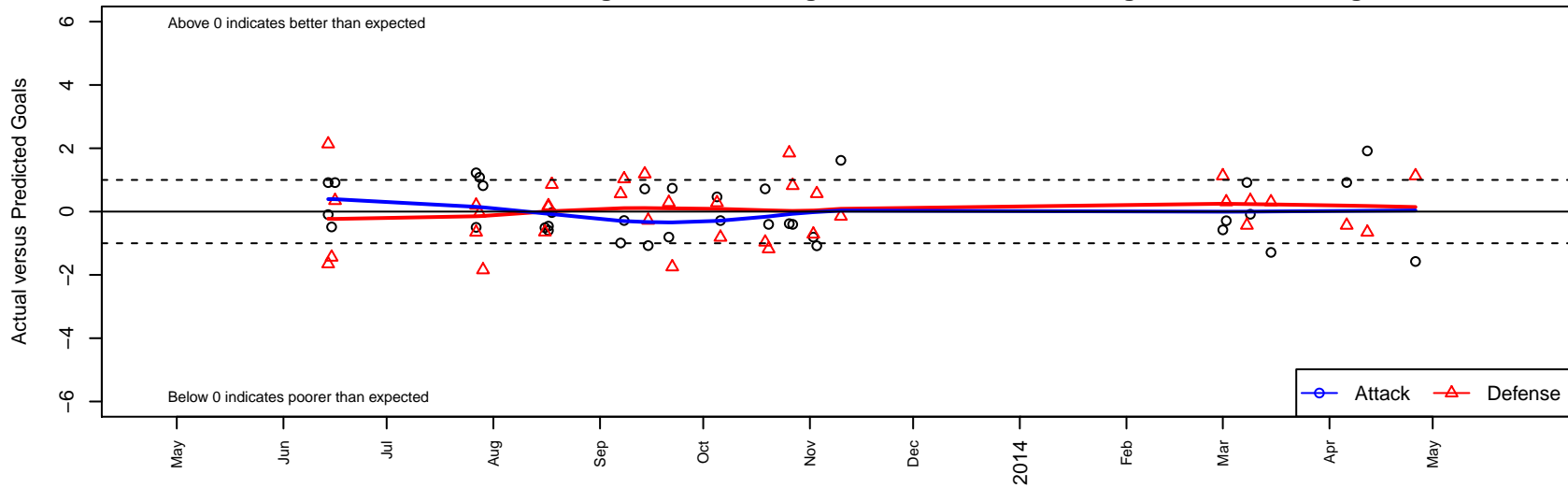
HSC Impact Red G99

Hillsboro Soccer Club
 Hillsboro, OR
 G99 total strength=746
 attack=0.8 defense=0.86
 fall league = OPL Second Division U14, OPL D
 alt names used:
 HSC 99G Impact Red
 HSC Impact Red
 HSC Impact [Red]
 HILLSBORO SC IMPACT (OR) [Red]

Venues played:
 United Cup U14
 River City Cup Girls U-14 Gold U14
 Mt Hood Challenge GU14 Silver 2
 OPL Second Division U14
 OPL Directors Cup Silver U14
 Spr OPL Multnomah Division U14



HSC Impact Red G99
 Dots are actual minus expected GF (blue circles) and GA (red triangles).
 Blue line is smoothed change in attack strength. Red is smoothed change in defense strength.



| | date | home | | away | | venue | pred.home | pred.away |
|-------|-------------|--------------------------------|---|-----------------------------|---|------------------------------------|------------------|------------------|
| 16850 | 2014-04-26 | Pacific FC Ice G99 | 0 | HSC Impact Red G99 | 1 | Spr OPL Multnomah Division U14 | 1.128 | 2.58 |
| 16713 | 2014-04-12 | THUSC Zinc G99 | 1 | HSC Impact Red G99 | 3 | Spr OPL Multnomah Division U14 | 0.347 | 1.08 |
| 16650 | 2014-04-06 | PCU SESC Furies G99 | 1 | HSC Impact Red G99 | 3 | Spr OPL Multnomah Division U14 | 0.566 | 2.08 |
| 16325 | 2014-03-15 | HSC Impact Red G99 | 3 | Foothills SC Galaxy G99 | 0 | Spr OPL Multnomah Division U14 | 4.289 | 0.31 |
| 16270 | 2014-03-09 | HSC Impact Red G99 | 1 | THUSC Zinc G99 | 0 | Spr OPL Multnomah Division U14 | 1.084 | 0.35 |
| 16205 | 2014-03-08 | HSC Impact Red G99 | 3 | PCU SESC Furies G99 | 1 | Spr OPL Multnomah Division U14 | 2.081 | 0.57 |
| 16139 | 2014-03-02 | HSC Impact Red G99 | 4 | Foothills SC Galaxy G99 | 0 | Spr OPL Multnomah Division U14 | 4.289 | 0.31 |
| 16095 | 2014-03-01 | HSC Impact Red G99 | 2 | Pacific FC Ice G99 | 0 | Spr OPL Multnomah Division U14 | 2.577 | 1.13 |
| 15341 | 2013-11-10 | Capital FC Timbers Red G99 | 3 | HSC Impact Red G99 | 2 | OPL Directors Cup Silver U14 | 2.850 | 0.38 |
| 15182 | 2013-11-03 | HSC Impact Red G99 | 1 | PCU SESC Furies G99 | 0 | OPL Directors Cup Silver U14 | 2.081 | 0.57 |
| 15083 | 2013-11-02 | Pacific FC White Lightning G99 | 2 | HSC Impact Red G99 | 0 | OPL Directors Cup Silver U14 | 1.286 | 0.81 |
| 14981 | 2013-10-27 | HSC Impact Red G99 | 0 | BSC Portland Gold G99 | 1 | OPL Second Division U14 | 0.404 | 1.82 |
| 14892 | 2013-10-26 | HSC Impact Red G99 | 0 | Capital FC Timbers Red G99 | 1 | OPL Second Division U14 | 0.381 | 2.85 |
| 14798 | 2013-10-20 | BSC Portland Gold G99 | 3 | HSC Impact Red G99 | 0 | OPL Second Division U14 | 1.820 | 0.40 |
| 14707 | 2013-10-19 | HSC Impact Red G99 | 1 | Eastside Timbers Black G99 | 4 | OPL Second Division U14 | 0.282 | 3.03 |
| 14398 | 2013-10-06 | HSC Impact Red G99 | 1 | OSA Tsunami G99 | 2 | OPL Second Division U14 | 1.284 | 1.19 |
| 14289 | 2013-10-05 | HSC Impact Red G99 | 1 | Molalla YS Pride Orange G99 | 2 | OPL Second Division U14 | 0.536 | 2.28 |
| 13959 | 2013-09-22 | HSC Impact Red G99 | 2 | NEU Juventus Blue G99 | 3 | OPL Second Division U14 | 1.262 | 1.25 |
| 13834 | 2013-09-21 | Pacific FC White Lightning G99 | 1 | HSC Impact Red G99 | 0 | OPL Second Division U14 | 1.286 | 0.81 |
| 13712 | 2013-09-15 | Canby United Primavera G99 | 1 | HSC Impact Red G99 | 0 | OPL Second Division U14 | 0.724 | 1.07 |
| 13620 | 2013-09-14 | OSA Tsunami G99 | 0 | HSC Impact Red G99 | 2 | OPL Second Division U14 | 1.187 | 1.28 |
| 13505 | 2013-09-08 | Eastside Timbers Black G99 | 2 | HSC Impact Red G99 | 0 | OPL Second Division U14 | 3.033 | 0.28 |
| 13406 | 2013-09-07 | Thelo Force G99 | 0 | HSC Impact Red G99 | 0 | OPL Second Division U14 | 0.561 | 0.99 |
| 13138 | 2013-08-18 | HSC Impact Red G99 | 1 | FC West Zebra Force G99 | 1 | Mt Hood Challenge GU14 Silver 2 | 1.031 | 1.86 |
| 13038 | 2013-08-17 | HSC Impact Red G99 | 0 | WPFC White G99 | 3 | Mt Hood Challenge GU14 Silver 2 | 0.460 | 3.15 |
| 13087 | 2013-08-17 | HSC Impact Red G99 | 0 | WYO 307 G99 | 1 | Mt Hood Challenge GU14 Silver 2 | 0.595 | 1.18 |
| 13009 | 2013-08-16 | Crossfire Premier C G99 | 3 | HSC Impact Red G99 | 0 | Mt Hood Challenge GU14 Silver 2 | 2.353 | 0.51 |
| 12658 | 2013-07-29 | HSC Impact Red G99 | 2 | CDA Sting Real Madrid G99 | 3 | River City Cup Girls U-14 Gold U14 | 1.182 | 1.16 |

| | date | home | | away | | venue | pred.home | pred.away |
|-------|-------------|-----------------------|---|-------------------------|---|------------------------------------|------------------|------------------|
| 12653 | 2013-07-28 | FC Spokane Grey 1 G99 | 1 | HSC Impact Red G99 | 2 | River City Cup Girls U-14 Gold U14 | 0.948 | 0.92 |
| 12634 | 2013-07-27 | HSC Impact Red G99 | 2 | Spokane Foxes Black G99 | 3 | River City Cup Girls U-14 Gold U14 | 0.776 | 3.20 |
| 12636 | 2013-07-27 | HSC Impact Red G99 | 2 | ASE Navy G99 | 1 | River City Cup Girls U-14 Gold U14 | 2.498 | 0.35 |
| 12148 | 2013-06-16 | HSC Impact Red G99 | 2 | THUSC Zinc G99 | 0 | United Cup U14 | 1.084 | 0.35 |
| 12132 | 2013-06-15 | THUSC Chromium G99 | 4 | HSC Impact Red G99 | 0 | United Cup U14 | 2.557 | 0.49 |
| 12087 | 2013-06-14 | HSC Impact Red G99 | 0 | THUSC Zirconium G99 | 8 | United Cup U14 | 0.095 | 10.14 |
| 12089 | 2013-06-14 | THUSC Zinc G99 | 2 | HSC Impact Red G99 | 2 | United Cup U14 | 0.347 | 1.08 |